

Product datasheet for **TA361993**

MAGI1 Rabbit Polyclonal Antibody

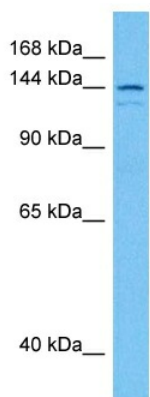
Product data:

Product Type:	Primary Antibodies
Applications:	WB
Reactivity:	Human
Host:	Rabbit
Clonality:	Polyclonal
Immunogen:	The immunogen is a synthetic peptide directed towards the middle region of human MAGI1
Specificity:	Expected reactivity: Human
Formulation:	Liquid. Purified antibody supplied in 1x PBS buffer with 0.09% (w/v) sodium azide and 2% sucrose. <i>Note that this product is shipped as lyophilized powder to China customers.</i>
Concentration:	lot specific
Purification:	Affinity purified
Conjugation:	Unconjugated
Storage:	For short term use, store at 2-8°C up to 1 week. For long term storage, store at -20°C in small aliquots to prevent freeze-thaw cycles.
Stability:	Shelf life: one year from despatch.
Predicted Protein Size:	141 kDa
Gene Name:	membrane associated guanylate kinase, WW and PDZ domain containing 1
Database Link:	NP_001028229.1 Entrez Gene 9223 Human Q96QZ7-5
Background:	The protein encoded by this gene is a member of the membrane-associated guanylate kinase homologue (MAGUK) family. MAGUK proteins participate in the assembly of multiprotein complexes on the inner surface of the plasma membrane at regions of cell-cell contact. The product of this gene may play a role as scaffolding protein at cell-cell junctions. Alternatively spliced transcript variants encoding different isoforms have been identified.
Synonyms:	AIP3; BAIAP1; BAP-1; BAP1; MAGI-1; TNRC19; WWP3
Protein Pathways:	Tight junction



[View online »](#)

Product images:



Host: Rabbit
Target Name: MAGI1
Sample Type: COLO205 Cell Lysate
Antibody Dilution: 1.0 μ g/ml

Host: Rabbit
Target Name: MAGI1
Sample Tissue: Human COLO205 Whole Cell lysates
Antibody Dilution: 1 μ g/ml