

Product datasheet for **TA361987**

ITM2B Rabbit Polyclonal Antibody

Product data:

Product Type:	Primary Antibodies
Applications:	WB
Reactivity:	Human
Host:	Rabbit
Clonality:	Polyclonal
Immunogen:	The immunogen is a synthetic peptide directed towards the N terminal region of human ITM2B
Specificity:	Expected reactivity: Human
Formulation:	Liquid. Purified antibody supplied in 1x PBS buffer with 0.09% (w/v) sodium azide and 2% sucrose. <i>Note that this product is shipped as lyophilized powder to China customers.</i>
Concentration:	lot specific
Purification:	Affinity purified
Conjugation:	Unconjugated
Storage:	For short term use, store at 2-8°C up to 1 week. For long term storage, store at -20°C in small aliquots to prevent freeze-thaw cycles.
Stability:	Shelf life: one year from despatch.
Predicted Protein Size:	29 kDa
Gene Name:	integral membrane protein 2B
Database Link:	NP_068839.1 Entrez Gene 9445 Human Q9Y287



[View online »](#)

Background:

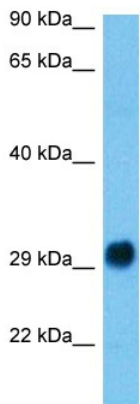
Amyloid precursor proteins are processed by beta-secretase and gamma-secretase to produce beta-amyloid peptides which form the characteristic plaques of Alzheimer disease. This gene encodes a transmembrane protein which is processed at the C-terminus by furin or furin-like proteases to produce a small secreted peptide which inhibits the deposition of beta-amyloid. Mutations which result in extension of the C-terminal end of the encoded protein, thereby increasing the size of the secreted peptide, are associated with two neurodegenerative diseases, familial British dementia and familial Danish dementia.

Synonyms:

ABRI; BRI; BRI2; BRICD2B; E3-16; E25B; FBD

Protein Families:

Druggable Genome, Transmembrane

Product images:

Host: Rabbit
Target Name: ITM2B
Sample Type: Esophagus Tumor Lysate
Antibody Dilution: 1.0µg/ml

Host: Rabbit
Target Name: ITM2B
Sample Tissue: Human Esophagus Tumor lysates
Antibody Dilution: 1 ug/ml