

Product datasheet for **TA361976**

GEF H1 (ARHGEF2) Rabbit Polyclonal Antibody

Product data:

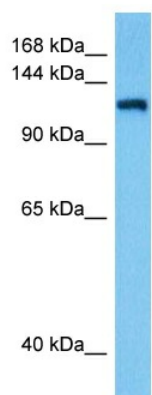
Product Type:	Primary Antibodies
Applications:	WB
Reactivity:	Human
Host:	Rabbit
Clonality:	Polyclonal
Immunogen:	The immunogen is a synthetic peptide directed towards the C terminal region of human ARHGEF2
Specificity:	Expected reactivity: Human
Formulation:	Liquid. Purified antibody supplied in 1x PBS buffer with 0.09% (w/v) sodium azide and 2% sucrose. <i>Note that this product is shipped as lyophilized powder to China customers.</i>
Concentration:	lot specific
Purification:	Affinity purified
Conjugation:	Unconjugated
Storage:	For short term use, store at 2-8°C up to 1 week. For long term storage, store at -20°C in small aliquots to prevent freeze-thaw cycles.
Stability:	Shelf life: one year from despatch.
Predicted Protein Size:	108 kDa
Gene Name:	Rho/Rac guanine nucleotide exchange factor 2
Database Link:	NP_001155855.1 Entrez Gene 9181 Human Q92974
Background:	Rho GTPases play a fundamental role in numerous cellular processes that are initiated by extracellular stimuli that work through G protein coupled receptors. The encoded protein may form complex with G proteins and stimulate rho-dependent signals. Alternatively spliced transcript variants encoding different isoforms have been identified.
Synonyms:	DKFZp547L106; DKFZp547P1516; FLJ45440; GEF; GEF-H1; GEFH1; KIAA0651; LFP40; P40
Protein Families:	Druggable Genome



[View online >](#)

Protein Pathways: Pathogenic Escherichia coli infection

Product images:



Host: Rabbit
Target Name: ARHGEF2
Sample Type: HT1080 Cell Lysate
Antibody Dilution: 1.0 μ g/ml

Host: Rabbit
Target Name: ARHGEF2
Sample Tissue: Human HT1080 Whole Cell lysates
Antibody Dilution: 1 μ g/ml