

## Product datasheet for **TA361971**

### **GOLPH3 Rabbit Polyclonal Antibody**

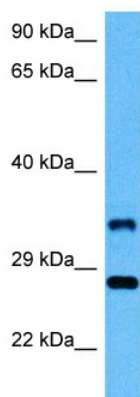
#### **Product data:**

Product Type:	Primary Antibodies
Applications:	WB
Reactivity:	Human
Host:	Rabbit
Clonality:	Polyclonal
Immunogen:	The immunogen is a synthetic peptide directed towards the N terminal region of human GOLPH3
Specificity:	<b>Expected reactivity:</b> Human
Formulation:	Liquid. Purified antibody supplied in 1x PBS buffer with 0.09% (w/v) sodium azide and 2% sucrose. <i>Note that this product is shipped as lyophilized powder to China customers.</i>
Concentration:	lot specific
Purification:	Affinity purified
Conjugation:	Unconjugated
Storage:	For short term use, store at 2-8°C up to 1 week. For long term storage, store at -20°C in small aliquots to prevent freeze-thaw cycles.
Stability:	Shelf life: one year from despatch.
Predicted Protein Size:	34 kDa
Gene Name:	golgi phosphoprotein 3
Database Link:	<a href="#">NP_071413.1</a> <a href="#">Entrez Gene 64083 Human</a> <a href="#">Q9H4A6</a>
Background:	The Golgi complex plays a key role in the sorting and modification of proteins exported from the endoplasmic reticulum. The protein encoded by this gene is a peripheral membrane protein of the Golgi stack and may have a regulatory role in Golgi trafficking. Several alternatively spliced transcript variants of this gene have been described, but the full-length nature of these variants has not been determined.
Synonyms:	coat-protein; FLJ90675; GOPP1; GPP34; MIDAS



[View online >](#)

## Product images:



Host: Rabbit  
Target Name: GOLPH3  
Sample Type: MCF7 Cell Lysate  
Antibody Dilution: 1.0 $\mu$ g/ml

Host: Rabbit  
Target Name: GOLPH3  
Sample Tissue: Human MCF7 Whole Cell lysates  
Antibody Dilution: 1  $\mu$ g/ml