

Product datasheet for **TA361966**

FAIM1 (FAIM) Rabbit Polyclonal Antibody

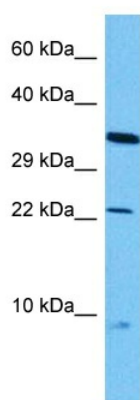
Product data:

Product Type:	Primary Antibodies
Applications:	WB
Reactivity:	Human
Host:	Rabbit
Clonality:	Polyclonal
Immunogen:	The immunogen is a synthetic peptide directed towards the N terminal region of human FAIM
Specificity:	Expected reactivity: Human
Formulation:	Liquid. Purified antibody supplied in 1x PBS buffer with 0.09% (w/v) sodium azide and 2% sucrose. <i>Note that this product is shipped as lyophilized powder to China customers.</i>
Concentration:	lot specific
Purification:	Affinity purified
Conjugation:	Unconjugated
Storage:	For short term use, store at 2-8°C up to 1 week. For long term storage, store at -20°C in small aliquots to prevent freeze-thaw cycles.
Stability:	Shelf life: one year from despatch.
Predicted Protein Size:	23 kDa
Gene Name:	Fas apoptotic inhibitory molecule
Database Link:	NP_001028202.1 Entrez Gene 55179 Human Q9NVQ4-2
Background:	The protein encoded by this gene protects against death receptor-triggered apoptosis and regulates B-cell signaling and differentiation. Several transcript variants encoding different isoforms have been found for this gene.
Synonyms:	FAIM1; FLJ10582



[View online »](#)

Product images:



Host: Rabbit
Target Name: FAIM
Sample Type: LN18 Cell Lysate
Antibody Dilution: 1.0 μ g/ml

Host: Rabbit
Target Name: FAIM
Sample Tissue: Human LN18 Whole Cell lysates
Antibody Dilution: 1 μ g/ml