

## Product datasheet for **TA361965**

### LTK Rabbit Polyclonal Antibody

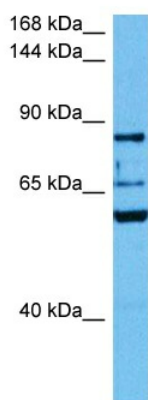
#### Product data:

Product Type:	Primary Antibodies
Applications:	WB
Reactivity:	Human
Host:	Rabbit
Clonality:	Polyclonal
Immunogen:	The immunogen is a synthetic peptide directed towards the middle terminal region of human LTK
Specificity:	<b>Expected reactivity:</b> Human
Formulation:	Liquid. Purified antibody supplied in 1x PBS buffer with 0.09% (w/v) sodium azide and 2% sucrose. <i>Note that this product is shipped as lyophilized powder to China customers.</i>
Concentration:	lot specific
Purification:	Affinity purified
Conjugation:	Unconjugated
Storage:	For short term use, store at 2-8°C up to 1 week. For long term storage, store at -20°C in small aliquots to prevent freeze-thaw cycles.
Stability:	Shelf life: one year from despatch.
Predicted Protein Size:	80 kDa
Gene Name:	leukocyte receptor tyrosine kinase
Database Link:	<a href="#">NP_001129157.1</a> <a href="#">Entrez Gene 4058 Human</a> <a href="#">P29376-5</a>
Background:	The protein encoded by this gene is a member of the ros/insulin receptor family of tyrosine kinases. Tyrosine-specific phosphorylation of proteins is a key to the control of diverse pathways leading to cell growth and differentiation. Multiple transcript variants encoding different isoforms have been found for this gene.
Synonyms:	TYK1
Protein Families:	Druggable Genome, Protein Kinase, Transmembrane



[View online >](#)

## Product images:



Host: Rabbit  
Target Name: LTK  
Sample Type: COLO205 Cell Lysate  
Antibody Dilution: 1.0 $\mu$ g/ml

Host: Rabbit  
Target Name: LTK  
Sample Tissue: Human COLO205 Whole Cell lysates  
Antibody Dilution: 1 $\mu$ g/ml