

## Product datasheet for **TA361964**

### SLC3A1 Rabbit Polyclonal Antibody

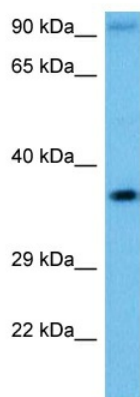
#### Product data:

Product Type:	Primary Antibodies
Applications:	WB
Reactivity:	Human
Host:	Rabbit
Clonality:	Polyclonal
Immunogen:	The immunogen is a synthetic peptide directed towards the middle region of human SLC3A1
Specificity:	<b>Expected reactivity:</b> Human
Formulation:	Liquid. Purified antibody supplied in 1x PBS buffer with 0.09% (w/v) sodium azide and 2% sucrose. <i>Note that this product is shipped as lyophilized powder to China customers.</i>
Concentration:	lot specific
Purification:	Affinity purified
Conjugation:	Unconjugated
Storage:	For short term use, store at 2-8°C up to 1 week. For long term storage, store at -20°C in small aliquots to prevent freeze-thaw cycles.
Stability:	Shelf life: one year from despatch.
Predicted Protein Size:	34 kDa
Gene Name:	solute carrier family 3 member 1
Database Link:	<a href="#">NP_000332.2</a> <a href="#">Entrez Gene 6519 Human</a> <a href="#">Q07837-4</a>
Background:	This gene encodes a type II membrane glycoprotein which is one of the components of the renal amino acid transporter which transports neutral and basic amino acids in the renal tubule and intestinal tract. Mutations and deletions in this gene are associated with cystinuria. Alternatively spliced transcript variants have been described, but their biological validity has not been determined.
Synonyms:	ATR1; CSNU1; D2H; FLJ34681; NBAT; RBAT
Protein Families:	Druggable Genome, Transmembrane



[View online »](#)

## Product images:



Host: Rabbit  
Target Name: SLC3A1  
Sample Type: PANC1 Cell Lysate  
Antibody Dilution: 1.0 $\mu$ g/ml

Host: Rabbit  
Target Name: SLC3A1  
Sample Tissue: Human PANC1 Whole Cell lysates  
Antibody Dilution: 1ug/ml