

## Product datasheet for **TA361952**

### Adenylosuccinate Lyase (ADSL) Rabbit Polyclonal Antibody

#### Product data:

Product Type:	Primary Antibodies
Applications:	WB
Reactivity:	Human
Host:	Rabbit
Clonality:	Polyclonal
Immunogen:	The immunogen is a synthetic peptide directed towards the middle region of human ADSL
Specificity:	<b>Expected reactivity:</b> Human
Formulation:	Liquid. Purified antibody supplied in 1x PBS buffer with 0.09% (w/v) sodium azide and 2% sucrose. <i>Note that this product is shipped as lyophilized powder to China customers.</i>
Concentration:	lot specific
Purification:	Affinity purified
Conjugation:	Unconjugated
Storage:	For short term use, store at 2-8°C up to 1 week. For long term storage, store at -20°C in small aliquots to prevent freeze-thaw cycles.
Stability:	Shelf life: one year from despatch.
Predicted Protein Size:	53 kDa
Gene Name:	adenylosuccinate lyase
Database Link:	<a href="#">NP_000017.1</a> <a href="#">Entrez Gene 158 Human</a> <a href="#">P30566</a>



[View online »](#)

**Background:**

The protein encoded by this gene belongs to the lyase 1 family. It is an essential enzyme involved in purine metabolism, and catalyzes two non-sequential reactions in the de novo purine biosynthetic pathway: the conversion of succinylaminoimidazole carboxamide ribotide (SAICAR) to aminoimidazole carboxamide ribotide (AICAR) and the conversion of adenylosuccinate (S-AMP) to adenosine monophosphate (AMP). Mutations in this gene are associated with adenylosuccinase deficiency (ADSLD), a disorder marked with psychomotor retardation, epilepsy or autistic features. Alternatively spliced transcript variants have been found for this gene.

**Synonyms:**

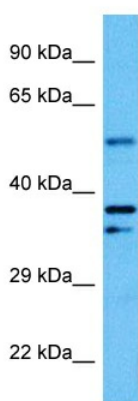
adenylosuccinase; AMPS; ASase; ASL

**Protein Families:**

Druggable Genome

**Protein Pathways:**

Alanine, aspartate and glutamate metabolism, Metabolic pathways, Purine metabolism

**Product images:**

Host: Rabbit  
Target Name: ADSL  
Sample Type: HeLa Cell Lysate  
Antibody Dilution: 1.0µg/ml

Host: Rabbit  
Target Name: ADSL  
Sample Tissue: Human HeLa Whole Cell lysates  
Antibody Dilution: 1ug/ml