

## Product datasheet for **TA361950**

### DNA Polymerase beta (POLB) Rabbit Polyclonal Antibody

#### Product data:

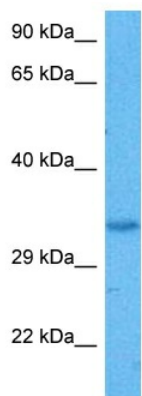
|                         |  |
|-------------------------|--|
| Product Type:           | Primary Antibodies   |
| Applications:           | WB   |
| Reactivity:             | Human  |
| Host:                   | Rabbit   |
| Clonality:              | Polyclonal   |
| Immunogen:              | The immunogen is a synthetic peptide directed towards the middle region of human POLB  |
| Specificity:            | <b>Expected reactivity:</b> Human  |
| Formulation:            | Liquid. Purified antibody supplied in 1x PBS buffer with 0.09% (w/v) sodium azide and 2% sucrose.<br><i>Note that this product is shipped as lyophilized powder to China customers.</i>  |
| Concentration:          | lot specific   |
| Purification:           | Affinity purified  |
| Conjugation:            | Unconjugated   |
| Storage:                | For short term use, store at 2-8°C up to 1 week. For long term storage, store at -20°C in small aliquots to prevent freeze-thaw cycles.  |
| Stability:              | Shelf life: one year from despatch.  |
| Predicted Protein Size: | 36 kDa   |
| Gene Name:              | polymerase (DNA) beta  |
| Database Link:          | <a href="#">NP_002681.1</a><br><a href="#">Entrez Gene 5423 Human</a><br><a href="#">P06746</a>  |
| Background:             | The protein encoded by this gene is a DNA polymerase involved in base excision and repair, also called gap-filling DNA synthesis. The encoded protein, acting as a monomer, is normally found in the cytoplasm, but it translocates to the nucleus upon DNA damage. Several transcript variants of this gene exist, but the full-length nature of only one has been described to date. |
| Synonyms:               | MGC125976  |
| Protein Families:       | Druggable Genome   |



[View online »](#)

Protein Pathways: Base excision repair

### Product images:



Host: Rabbit  
Target Name: POLB  
Sample Type: OVCAR-3 Cell Lysate  
Antibody Dilution: 1.0 $\mu$ g/ml

Host: Rabbit  
Target Name: POLB  
Sample Tissue: Human OVCAR-3 Whole Cell lysates  
Antibody Dilution: 1 $\mu$ g/ml