

Product datasheet for **TA361949**

BACE2 Rabbit Polyclonal Antibody

Product data:

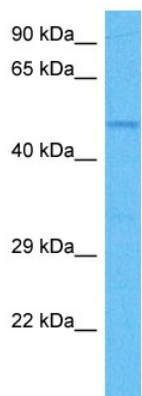
Product Type:	Primary Antibodies
Applications:	WB
Reactivity:	Human
Host:	Rabbit
Clonality:	Polyclonal
Immunogen:	The immunogen is a synthetic peptide directed towards the middle region of human BACE2
Specificity:	Expected reactivity: Human
Formulation:	Liquid. Purified antibody supplied in 1x PBS buffer with 0.09% (w/v) sodium azide and 2% sucrose. <i>Note that this product is shipped as lyophilized powder to China customers.</i>
Concentration:	lot specific
Purification:	Affinity purified
Conjugation:	Unconjugated
Storage:	For short term use, store at 2-8°C up to 1 week. For long term storage, store at -20°C in small aliquots to prevent freeze-thaw cycles.
Stability:	Shelf life: one year from despatch.
Predicted Protein Size:	51 kDa
Gene Name:	beta-site APP-cleaving enzyme 2
Database Link:	NP_036237.2 Entrez Gene 25825 Human Q9Y5Z0-2
Background:	This gene encodes an integral membrane glycoprotein that functions as an aspartic protease. The encoded protein cleaves amyloid precursor protein into amyloid beta peptide, which is a critical step in the etiology of Alzheimer's disease and Down syndrome. The protein precursor is further processed into an active mature peptide. Alternative splicing results in multiple transcript variants.
Synonyms:	AEPLC; ALP56; ASP1; ASP21; BAE2; CDA13; CEAP1; DRAP; Memapsin-1; Theta-secretase
Protein Families:	Druggable Genome, Protease, Transmembrane



[View online »](#)

Protein Pathways: Alzheimer's disease

Product images:



Host: Rabbit
Target Name: BACE2
Sample Type: HeLa Cell Lysate
Antibody Dilution: 1.0 μ g/ml

Host: Rabbit
Target Name: BACE2
Sample Tissue: Human HeLa Whole Cell lysates
Antibody Dilution: 1 μ g/ml