

## Product datasheet for TA361948

### DBPA (YBX3) Rabbit Polyclonal Antibody

#### Product data:

Product Type:	Primary Antibodies
Applications:	WB
Reactivity:	Human
Host:	Rabbit
Clonality:	Polyclonal
Immunogen:	The immunogen is a synthetic peptide directed towards the middle region of human YBX3
Specificity:	<b>Expected reactivity:</b> Human
Formulation:	Liquid. Purified antibody supplied in 1x PBS buffer with 0.09% (w/v) sodium azide and 2% sucrose. <i>Note that this product is shipped as lyophilized powder to China customers.</i>
Concentration:	lot specific
Purification:	Affinity purified
Conjugation:	Unconjugated
Storage:	For short term use, store at 2-8°C up to 1 week. For long term storage, store at -20°C in small aliquots to prevent freeze-thaw cycles.
Stability:	Shelf life: one year from despatch.
Predicted Protein Size:	33 kDa
Gene Name:	Y-box binding protein 3
Database Link:	<a href="#">NP_001138898.1</a> <a href="#">Entrez Gene 8531 Human</a> <a href="#">P16989-2</a>
Background:	Binds to the GM-CSF promoter. Seems to act as a repressor. Binds also to full-length mRNA and to short RNA sequences containing the consensus site 5'-UCCAUCA-3'. May have a role in translation repression (By similarity).

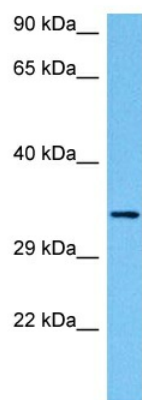


**Synonyms:** CSDA; CSDA1; DBPA; ZONAB

**Protein Families:** Transcription Factors

**Protein Pathways:** Tight junction

**Product images:**



Host: Rabbit  
Target Name: YBX3  
Sample Type: Du145 Cell Lysate  
Antibody Dilution: 1.0µg/ml

Host: Rabbit  
Target Name: YBX3  
Sample Tissue: Human Du145 Whole Cell lysates  
Antibody Dilution: 1ug/ml