

Product datasheet for **TA361947**

Cytochrome P450 4A (CYP4A11) Rabbit Polyclonal Antibody

Product data:

Product Type:	Primary Antibodies
Applications:	WB
Reactivity:	Human
Host:	Rabbit
Clonality:	Polyclonal
Immunogen:	The immunogen is a synthetic peptide directed towards the middle region of Human CYP4A11
Specificity:	Expected reactivity: Human
Formulation:	Liquid. Purified antibody supplied in 1x PBS buffer with 0.09% (w/v) sodium azide and 2% sucrose. <i>Note that this product is shipped as lyophilized powder to China customers.</i>
Concentration:	lot specific
Purification:	Affinity purified
Conjugation:	Unconjugated
Storage:	For short term use, store at 2-8°C up to 1 week. For long term storage, store at -20°C in small aliquots to prevent freeze-thaw cycles.
Stability:	Shelf life: one year from despatch.
Predicted Protein Size:	57 kDa
Gene Name:	cytochrome P450 family 4 subfamily A member 11
Database Link:	NP_000769.2 Entrez Gene 1579 Human Q02928
Background:	This gene encodes a member of the cytochrome P450 superfamily of enzymes. The cytochrome P450 proteins are monooxygenases which catalyze many reactions involved in drug metabolism and synthesis of cholesterol, steroids and other lipids. This protein localizes to the endoplasmic reticulum and hydroxylates medium-chain fatty acids such as laurate and myristate. Multiple transcript variants have been found for this gene.
Synonyms:	CP4Y; CYP4A2; CYP4A11; CYP4A11; P450-HL-omega; P450HL-omega

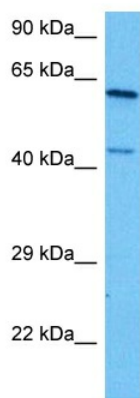


[View online >](#)

Protein Families: Druggable Genome, P450, Transmembrane

Protein Pathways: Arachidonic acid metabolism, Fatty acid metabolism, Metabolic pathways, PPAR signaling pathway, Retinol metabolism, Vascular smooth muscle contraction

Product images:



Host: Rabbit
Target Name: CYP4A11
Sample Type: 293T Cell Lysate
Antibody Dilution: 1.0 μ g/ml

Host: Rabbit
Target Name: CYP4A11
Sample Tissue: Human 293T Whole Cell lysates
Antibody Dilution: 1 μ g/ml