

Product datasheet for **TA361933**

S1PR2 Rabbit Polyclonal Antibody

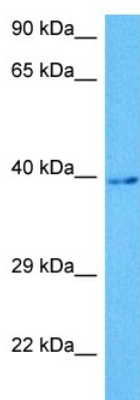
Product data:

Product Type:	Primary Antibodies
Applications:	WB
Reactivity:	Human
Host:	Rabbit
Clonality:	Polyclonal
Immunogen:	The immunogen is a synthetic peptide directed towards the middle region of human S1PR2
Specificity:	Expected reactivity: Human
Formulation:	Liquid. Purified antibody supplied in 1x PBS buffer with 0.09% (w/v) sodium azide and 2% sucrose. <i>Note that this product is shipped as lyophilized powder to China customers.</i>
Concentration:	lot specific
Purification:	Affinity purified
Conjugation:	Unconjugated
Storage:	For short term use, store at 2-8°C up to 1 week. For long term storage, store at -20°C in small aliquots to prevent freeze-thaw cycles.
Stability:	Shelf life: one year from despatch.
Predicted Protein Size:	38 kDa
Gene Name:	sphingosine-1-phosphate receptor 2
Database Link:	NP_004221.3 Entrez Gene 9294 Human O95136
Background:	This gene encodes a member of the G protein-coupled receptors, as well as the EDG family of proteins. This protein participates in sphingosine 1-phosphate-induced cell proliferation, survival, and transcriptional activation
Synonyms:	AGR16; EDG-5; EDG5; Gpcr13; H218; LPB2; S1P2



[View online »](#)

Product images:



Host: Rabbit
Target Name: S1PR2
Sample Type: A549 Cell Lysate
Antibody Dilution: 1.0 μ g/ml

Host: Rabbit
Target Name: S1PR2
Sample Tissue: Human A549 Whole Cell lysates
Antibody Dilution: 1 μ g/ml