

## Product datasheet for **TA361913**

### Alkaline Phosphatase (ALPI) Rabbit Polyclonal Antibody

#### Product data:

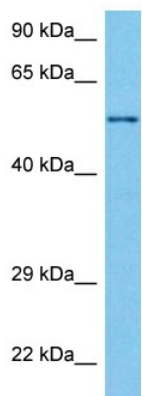
Product Type:	Primary Antibodies
Applications:	WB
Reactivity:	Human
Host:	Rabbit
Clonality:	Polyclonal
Immunogen:	The immunogen is a synthetic peptide directed towards the middle region of human ALPI
Specificity:	<b>Expected reactivity:</b> Human
Formulation:	Liquid. Purified antibody supplied in 1x PBS buffer with 0.09% (w/v) sodium azide and 2% sucrose. <i>Note that this product is shipped as lyophilized powder to China customers.</i>
Concentration:	lot specific
Purification:	Affinity purified
Conjugation:	Unconjugated
Storage:	For short term use, store at 2-8°C up to 1 week. For long term storage, store at -20°C in small aliquots to prevent freeze-thaw cycles.
Stability:	Shelf life: one year from despatch.
Predicted Protein Size:	58 kDa
Gene Name:	alkaline phosphatase, intestinal
Database Link:	<a href="#">NP_001622.2</a> <a href="#">Entrez Gene 248 Human</a> <a href="#">P09923</a>
Background:	There are at least four distinct but related alkaline phosphatases: intestinal, placental, placental-like, and liver/bone/kidney (tissue non-specific). The intestinal alkaline phosphatase gene encodes a digestive brush-border enzyme. This enzyme is a component of the gut mucosal defense system and is thought to function in the detoxification of lipopolysaccharide, and in the prevention of bacterial translocation in the gut.
Synonyms:	glycerophosphatase; IAP
Protein Families:	Druggable Genome



[View online »](#)

Protein Pathways: Folate biosynthesis, Metabolic pathways

### Product images:



Host: Rabbit  
Target Name: ALPI  
Sample Type: 786-0 Cell Lysate  
Antibody Dilution: 1.0 $\mu$ g/ml

Host: Rabbit  
Target Name: ALPI  
Sample Tissue: Human 786-0 Whole Cell lysates  
Antibody Dilution: 1  $\mu$ g/ml