

Product datasheet for **TA361908**

ULBP2 Rabbit Polyclonal Antibody

Product data:

Product Type:	Primary Antibodies
Applications:	WB
Reactivity:	Human
Host:	Rabbit
Clonality:	Polyclonal
Immunogen:	The immunogen is a synthetic peptide directed towards the middle region of human ULBP2
Specificity:	Expected reactivity: Human
Formulation:	Liquid. Purified antibody supplied in 1x PBS buffer with 0.09% (w/v) sodium azide and 2% sucrose. <i>Note that this product is shipped as lyophilized powder to China customers.</i>
Concentration:	lot specific
Purification:	Affinity purified
Conjugation:	Unconjugated
Storage:	For short term use, store at 2-8°C up to 1 week. For long term storage, store at -20°C in small aliquots to prevent freeze-thaw cycles.
Stability:	Shelf life: one year from despatch.
Predicted Protein Size:	27 kDa
Gene Name:	UL16 binding protein 2
Database Link:	NP_079493.1 Entrez Gene 80328 Human Q9BZM5
Background:	This gene encodes a major histocompatibility complex (MHC) class I-related molecule that binds to the NKG2D receptor on natural killer (NK) cells to trigger release of multiple cytokines and chemokines that in turn contribute to the recruitment and activation of NK cells. The encoded protein undergoes further processing to generate the mature protein that is either anchored to membrane via a glycosylphosphatidylinositol moiety, or secreted. Many malignant cells secrete the encoded protein to evade immunosurveillance by NK cells. This gene is located in a cluster of multiple MHC class I-related genes on chromosome 6.



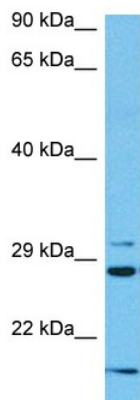
[View online »](#)

Synonyms: ALCAN-alpha; N2DL-2; N2DL2; NKG2DL2; RAET1H

Protein Families: Druggable Genome, Secreted Protein, Transmembrane

Protein Pathways: Natural killer cell mediated cytotoxicity

Product images:



Host: Rabbit
Target Name: ULBP2
Sample Type: Neurofibroma Tumor Lysate
Antibody Dilution: 1.0µg/ml

Host: Rabbit
Target Name: ULBP2
Sample Tissue: Human Neurofibroma Tumor lysates
Antibody Dilution: 1ug/ml