

Product datasheet for **TA361877**

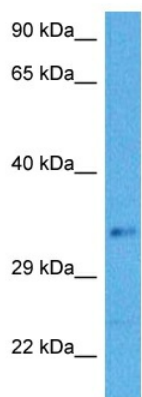
Bmi1 (COMMD3-BMI1) Rabbit Polyclonal Antibody

Product data:

Product Type:	Primary Antibodies
Applications:	WB
Reactivity:	Human
Host:	Rabbit
Clonality:	Polyclonal
Immunogen:	The immunogen is a synthetic peptide directed towards the middle region of human BMI1
Specificity:	Expected reactivity: Human
Formulation:	Liquid. Purified antibody supplied in 1x PBS buffer with 0.09% (w/v) sodium azide and 2% sucrose. <i>Note that this product is shipped as lyophilized powder to China customers.</i>
Concentration:	lot specific
Purification:	Affinity purified
Conjugation:	Unconjugated
Storage:	For short term use, store at 2-8°C up to 1 week. For long term storage, store at -20°C in small aliquots to prevent freeze-thaw cycles.
Stability:	Shelf life: one year from despatch.
Predicted Protein Size:	35 kDa
Gene Name:	COMMD3-BMI1 readthrough
Database Link:	NP_001190991.1 Entrez Gene 100532731 Human P35226
Background:	This locus represents naturally occurring read-through transcription between the neighboring COMM domain-containing protein 3 and polycomb complex protein BMI-1 genes on chromosome 10. The read-through transcript produces a fusion protein that shares sequence identity with each individual gene product.



[View online »](#)

Product images:

Host: Rabbit
Target Name: BMI1
Sample Type: HCT116 Cell Lysate
Antibody Dilution: 1.0 μ g/ml

Host: Rabbit
Target Name: BMI1
Sample Tissue: Human HCT116 Whole Cell lysates
Antibody Dilution: 1 μ g/ml