

## Product datasheet for **TA361873**

### Slap (SLA) Rabbit Polyclonal Antibody

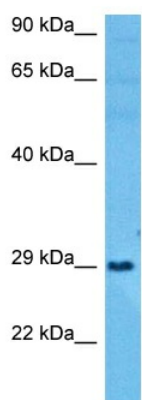
#### Product data:

Product Type:	Primary Antibodies
Applications:	WB
Reactivity:	Human
Host:	Rabbit
Clonality:	Polyclonal
Immunogen:	The immunogen is a synthetic peptide directed towards the N terminal region of human SLA
Specificity:	<b>Expected reactivity:</b> Human
Formulation:	Liquid. Purified antibody supplied in 1x PBS buffer with 0.09% (w/v) sodium azide and 2% sucrose. <i>Note that this product is shipped as lyophilized powder to China customers.</i>
Concentration:	lot specific
Purification:	Affinity purified
Conjugation:	Unconjugated
Storage:	For short term use, store at 2-8°C up to 1 week. For long term storage, store at -20°C in small aliquots to prevent freeze-thaw cycles.
Stability:	Shelf life: one year from despatch.
Predicted Protein Size:	27 kDa
Gene Name:	Src-like-adaptor
Database Link:	<a href="#">NP_001039021.1</a> <a href="#">Entrez Gene 6503 Human</a> <a href="#">Q13239-4</a>
Background:	Adapter protein, which negatively regulates T-cell receptor (TCR) signaling. Inhibits T-cell antigen-receptor induced activation of nuclear factor of activated T-cells. Involved in the negative regulation of positive selection and mitosis of T-cells. May act by linking signaling proteins such as ZAP70 with CBL, leading to a CBL dependent degradation of signaling proteins.
Synonyms:	hSLAP; SLA1; SLAP; SLAP1; Src-like-adaptor; Src-like-adaptor
Protein Families:	Druggable Genome



[View online »](#)

Product images:



Host: Rabbit  
Target Name: SLA  
Sample Type: Testicular Tumor Lysate  
Antibody Dilution: 1.0 $\mu$ g/ml

Host: Rabbit  
Target Name: SLA  
Sample Tissue: Human Testicular Tumor lysates  
Antibody Dilution: 1 $\mu$ g/ml