

Product datasheet for **TA361871**

Emerin (EMD) Rabbit Polyclonal Antibody

Product data:

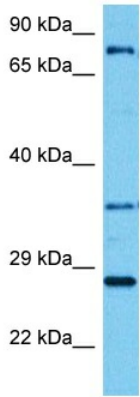
Product Type:	Primary Antibodies
Applications:	WB
Reactivity:	Human
Host:	Rabbit
Clonality:	Polyclonal
Immunogen:	The immunogen is a synthetic peptide directed towards the middle region of Human EMD
Specificity:	Expected reactivity: Human
Formulation:	Liquid. Purified antibody supplied in 1x PBS buffer with 0.09% (w/v) sodium azide and 2% sucrose. <i>Note that this product is shipped as lyophilized powder to China customers.</i>
Concentration:	lot specific
Purification:	Affinity purified
Conjugation:	Unconjugated
Storage:	For short term use, store at 2-8°C up to 1 week. For long term storage, store at -20°C in small aliquots to prevent freeze-thaw cycles.
Stability:	Shelf life: one year from despatch.
Predicted Protein Size:	27 kDa
Gene Name:	emerin
Database Link:	NP_000108.1 Entrez Gene 2010 Human P50402
Background:	Emerin is a serine-rich nuclear membrane protein and a member of the nuclear lamina-associated protein family. It mediates membrane anchorage to the cytoskeleton. Dreifuss-Emery muscular dystrophy is an X-linked inherited degenerative myopathy resulting from mutation in the emerin gene.
Synonyms:	EDMD; emerin; LEMD5; STA
Protein Families:	Druggable Genome, Transmembrane



[View online »](#)

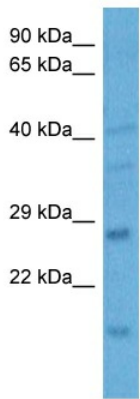
Protein Pathways: Arrhythmogenic right ventricular cardiomyopathy (ARVC), Dilated cardiomyopathy, Hypertrophic cardiomyopathy (HCM)

Product images:



Host: Rabbit
 Target Name: EMD
 Sample Type: U937 Cell Lysate
 Antibody Dilution: 1.0µg/ml

Host: Rabbit
 Target Name: EMD
 Sample Tissue: Human U937 Whole Cell lysates
 Antibody Dilution: 1ug/ml



Host: Rabbit
 Target Name: EMD
 Sample Type: U937 Cell Lysate
 Antibody Dilution: 1.0µg/ml

Host: Rabbit
 Target Name: EMD
 Sample Tissue: Human U937 Whole Cell
 Antibody Dilution: 3ug/ml