

## Product datasheet for **TA361870**

### ARHGEF1 Rabbit Polyclonal Antibody

#### Product data:

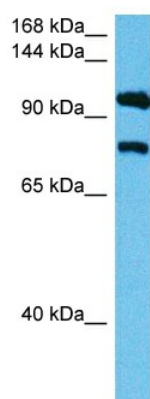
Product Type:	Primary Antibodies
Applications:	WB
Reactivity:	Human
Host:	Rabbit
Clonality:	Polyclonal
Immunogen:	The immunogen is a synthetic peptide directed towards the middle region of human ARHGEF1
Specificity:	<b>Expected reactivity:</b> Human
Formulation:	Liquid. Purified antibody supplied in 1x PBS buffer with 0.09% (w/v) sodium azide and 2% sucrose. <i>Note that this product is shipped as lyophilized powder to China customers.</i>
Concentration:	lot specific
Purification:	Affinity purified
Conjugation:	Unconjugated
Storage:	For short term use, store at 2-8°C up to 1 week. For long term storage, store at -20°C in small aliquots to prevent freeze-thaw cycles.
Stability:	Shelf life: one year from despatch.
Predicted Protein Size:	102 kDa
Gene Name:	Rho guanine nucleotide exchange factor 1
Database Link:	<a href="#">NP_004697.2</a> <a href="#">Entrez Gene 9138 Human</a> <a href="#">Q92888-1</a>
Background:	Rho GTPases play a fundamental role in numerous cellular processes that are initiated by extracellular stimuli that work through G protein coupled receptors. The encoded protein may form complex with G proteins and stimulate Rho-dependent signals. Multiple alternatively spliced transcript variants have been found for this gene, but the full-length nature of some variants has not been defined.
Synonyms:	GEF1; LBCL2; LSC; P115-RHOGEF; p115RhoGEF; SUB1.5



[View online »](#)

Protein Pathways: Regulation of actin cytoskeleton, Vascular smooth muscle contraction

### Product images:



Host: Rabbit  
Target Name: ARHGEF1  
Sample Type: HepG2 Cell Lysate  
Antibody Dilution: 1.0 $\mu$ g/ml

Host: Rabbit  
Target Name: ARHGEF1  
Sample Tissue: Human HepG2 Whole Cell lysates  
Antibody Dilution: 1 $\mu$ g/ml