

## Product datasheet for **TA361862**

### **BORA Rabbit Polyclonal Antibody**

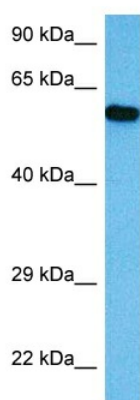
#### **Product data:**

Product Type:	Primary Antibodies
Applications:	WB
Reactivity:	Human
Host:	Rabbit
Clonality:	Polyclonal
Immunogen:	The immunogen is a synthetic peptide directed towards the middle region of human BORA
Specificity:	<b>Expected reactivity:</b> Human
Formulation:	Liquid. Purified antibody supplied in 1x PBS buffer with 0.09% (w/v) sodium azide and 2% sucrose. <i>Note that this product is shipped as lyophilized powder to China customers.</i>
Concentration:	lot specific
Purification:	Affinity purified
Conjugation:	Unconjugated
Storage:	For short term use, store at 2-8°C up to 1 week. For long term storage, store at -20°C in small aliquots to prevent freeze-thaw cycles.
Stability:	Shelf life: one year from despatch.
Predicted Protein Size:	61 kDa
Gene Name:	bora, aurora kinase A activator
Database Link:	<a href="#">NP_001273675.1</a> <a href="#">Entrez Gene 79866 Human</a> <a href="#">Q6PGQ7-1</a>
Background:	BORA is an activator of the protein kinase Aurora A, which is required for centrosome maturation, spindle assembly, and asymmetric protein localization during mitosis.
Synonyms:	6720463M24Rik; AI317232; RGD1309522
Protein Families:	Druggable Genome



[View online »](#)

## Product images:



Host: Rabbit  
Target Name: BORA  
Sample Type: Jurkat Cell Lysate  
Antibody Dilution: 1.0 $\mu$ g/ml

Host: Rabbit  
Target Name: BORA  
Sample Tissue: Human Jurkat Whole Cell lysates  
Antibody Dilution: 1 ug/ml