

## Product datasheet for **TA361860**

### **C1orf103 (LRIF1) Rabbit Polyclonal Antibody**

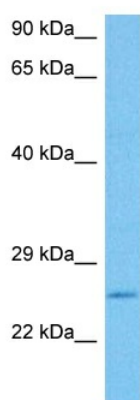
#### **Product data:**

Product Type:	Primary Antibodies
Applications:	WB
Reactivity:	Human
Host:	Rabbit
Clonality:	Polyclonal
Immunogen:	The immunogen is a synthetic peptide directed towards the middle region of Human C1ORF103
Specificity:	<b>Expected reactivity:</b> Human
Formulation:	Liquid. Purified antibody supplied in 1x PBS buffer with 0.09% (w/v) sodium azide and 2% sucrose. <i>Note that this product is shipped as lyophilized powder to China customers.</i>
Concentration:	lot specific
Purification:	Affinity purified
Conjugation:	Unconjugated
Storage:	For short term use, store at 2-8°C up to 1 week. For long term storage, store at -20°C in small aliquots to prevent freeze-thaw cycles.
Stability:	Shelf life: one year from despatch.
Predicted Protein Size:	25 kDa
Gene Name:	ligand dependent nuclear receptor interacting factor 1
Database Link:	<a href="#">NP_001006946.1</a> <a href="#">Entrez Gene 55791 Human</a> <a href="#">Q5T3J3-2</a>
Synonyms:	2010012G17Rik; 4933421E11Rik; AI450568; RGD1306520; Rif1
Protein Families:	Stem cell - Pluripotency



[View online »](#)

## Product images:



Host: Rabbit  
Target Name: C1orf103  
Sample Type: LN18 Cell Lysate  
Antibody Dilution: 1.0 $\mu$ g/ml

Host: Rabbit  
Target Name: C1ORF103  
Sample Tissue: Human LN18 Whole Cell lysates  
Antibody Dilution: 1 $\mu$ g/ml