

Product datasheet for **TA361858**

DIMT1L (DIMT1) Rabbit Polyclonal Antibody

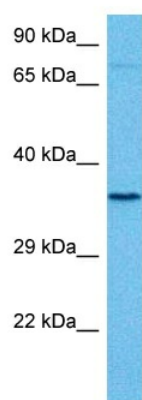
Product data:

Product Type:	Primary Antibodies
Applications:	WB
Reactivity:	Human
Host:	Rabbit
Clonality:	Polyclonal
Immunogen:	The immunogen is a synthetic peptide directed towards the middle region of human DIMT1L
Specificity:	Expected reactivity: Human
Formulation:	Liquid. Purified antibody supplied in 1x PBS buffer with 0.09% (w/v) sodium azide and 2% sucrose. <i>Note that this product is shipped as lyophilized powder to China customers.</i>
Concentration:	lot specific
Purification:	Affinity purified
Conjugation:	Unconjugated
Storage:	For short term use, store at 2-8°C up to 1 week. For long term storage, store at -20°C in small aliquots to prevent freeze-thaw cycles.
Stability:	Shelf life: one year from despatch.
Predicted Protein Size:	35 kDa
Gene Name:	DIM1 dimethyladenosine transferase 1 homolog
Database Link:	NP_055288.1 Entrez Gene 27292 Human Q9UNQ2
Background:	The protein encoded by this gene is a methyltransferase that is responsible for dimethylation of adjacent adenosines near the 18S rRNA decoding site. The encoded protein is essential for ribosome biogenesis, although its catalytic activity is not involved in the process. The yeast ortholog of this protein functions in the cytoplasm while this protein functions in the nucleus.
Synonyms:	1500031M22Rik; AV111347; Dimt1l; RGD1311752
Protein Families:	Druggable Genome



[View online »](#)

Product images:



Host: Rabbit
Target Name: DIMIT1L
Sample Type: Jurkat Cell Lysate
Antibody Dilution: 1.0 μ g/ml

Host: Rabbit
Target Name: DIMIT1L
Sample Tissue: Human Jurkat Whole Cell lysates
Antibody Dilution: 1 μ g/ml