

Product datasheet for **TA361850**

Spindly (SPDL1) Rabbit Polyclonal Antibody

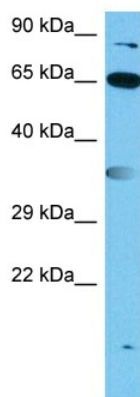
Product data:

Product Type:	Primary Antibodies
Applications:	WB
Reactivity:	Human
Host:	Rabbit
Clonality:	Polyclonal
Immunogen:	The immunogen is a synthetic peptide directed towards the middle region of human CCDC99
Specificity:	Expected reactivity: Human
Formulation:	Liquid. Purified antibody supplied in 1x PBS buffer with 0.09% (w/v) sodium azide and 2% sucrose. <i>Note that this product is shipped as lyophilized powder to China customers.</i>
Concentration:	lot specific
Purification:	Affinity purified
Conjugation:	Unconjugated
Storage:	For short term use, store at 2-8°C up to 1 week. For long term storage, store at -20°C in small aliquots to prevent freeze-thaw cycles.
Stability:	Shelf life: one year from despatch.
Predicted Protein Size:	66 kDa
Gene Name:	spindle apparatus coiled-coil protein 1
Database Link:	NP_060255.3 Entrez Gene 54908 Human Q96EA4
Background:	This gene encodes a coiled-coil domain-containing protein that functions in mitotic spindle formation and chromosome segregation. The encoded protein plays a role in coordinating microtubule attachment by promoting recruitment of dynein proteins, and in mitotic checkpoint signaling.
Synonyms:	1700018I02Rik; 2600001J17Rik; 2810049B11Rik; AA409762; Ccdc99; RGD1306908



[View online »](#)

Product images:



Host: Rabbit
Target Name: CCDC99
Sample Type: HCT15 Cell Lysate
Antibody Dilution: 1.0 μ g/ml

Host: Rabbit
Target Name: CCDC99
Sample Tissue: Human HCT15 Whole Cell lysates
Antibody Dilution: 1 μ g/ml