

Product datasheet for **TA361849**

C12orf48 (PARPBP) Rabbit Polyclonal Antibody

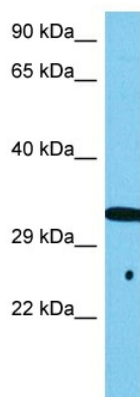
Product data:

Product Type:	Primary Antibodies
Applications:	WB
Reactivity:	Human
Host:	Rabbit
Clonality:	Polyclonal
Immunogen:	The immunogen is a synthetic peptide directed towards the C terminal region of human C12ORF48
Specificity:	Expected reactivity: Human
Formulation:	Liquid. Purified antibody supplied in 1x PBS buffer with 0.09% (w/v) sodium azide and 2% sucrose.
Concentration:	lot specific
Purification:	Affinity purified
Conjugation:	Unconjugated
Storage:	For short term use, store at 2-8°C up to 1 week. For long term storage, store at -20°C in small aliquots to prevent freeze-thaw cycles.
Stability:	Shelf life: one year from despatch.
Predicted Protein Size:	32 kDa
Gene Name:	PARP1 binding protein
Database Link:	NP_060385.3 Entrez Gene 55010 Human Q9NWS1-5
Synonyms:	AROM; C12orf48; PARI
Protein Families:	Druggable Genome



[View online »](#)

Product images:



Host: Rabbit
Target Name: C12orf48
Sample Type: U937 Cell Lysate
Antibody Dilution: 1.0 μ g/ml

Host: Rabbit
Target Name: C12ORF48
Sample Tissue: Human U937 Whole Cell lysates
Antibody Dilution: 1 μ g/ml