

## Product datasheet for **TA361842**

### CBARA1 (MICU1) Rabbit Polyclonal Antibody

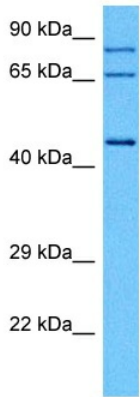
#### Product data:

Product Type:	Primary Antibodies
Applications:	WB
Reactivity:	Human
Host:	Rabbit
Clonality:	Polyclonal
Immunogen:	The immunogen is a synthetic peptide directed towards the N terminal region of human CBARA1
Specificity:	<b>Expected reactivity:</b> Human
Formulation:	Liquid. Purified antibody supplied in 1x PBS buffer with 0.09% (w/v) sodium azide and 2% sucrose. <i>Note that this product is shipped as lyophilized powder to China customers.</i>
Concentration:	lot specific
Purification:	Affinity purified
Conjugation:	Unconjugated
Storage:	For short term use, store at 2-8°C up to 1 week. For long term storage, store at -20°C in small aliquots to prevent freeze-thaw cycles.
Stability:	Shelf life: one year from despatch.
Predicted Protein Size:	44 kDa
Gene Name:	mitochondrial calcium uptake 1
Database Link:	<a href="#">NP_001182447.1</a> <a href="#">Entrez Gene 10367 Human</a> <a href="#">Q9BPX6-2</a>
Background:	This gene encodes an essential regulator of mitochondrial Ca <sup>2+</sup> uptake under basal conditions. The encoded protein interacts with the mitochondrial calcium uniporter, a mitochondrial inner membrane Ca <sup>2+</sup> channel, and is essential in preventing mitochondrial Ca <sup>2+</sup> overload, which can cause excessive production of reactive oxygen species and cell stress. Alternatively spliced transcript variants encoding different isoforms have been described.



[View online »](#)

Synonyms: C730016L05Rik; Calc; Cbara1

**Product images:**

Host: Rabbit  
Target Name: CBARA1  
Sample Type: HT1080 Cell Lysate  
Antibody Dilution: 1.0 $\mu$ g/ml

Host: Rabbit  
Target Name: CBARA1  
Sample Tissue: Human HT1080 Whole Cell lysates  
Antibody Dilution: 1 $\mu$ g/ml