

Product datasheet for **TA361840**

C13orf18 (RUBCNL) Rabbit Polyclonal Antibody

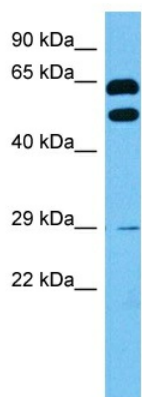
Product data:

Product Type:	Primary Antibodies
Applications:	WB
Reactivity:	Human
Host:	Rabbit
Clonality:	Polyclonal
Immunogen:	The immunogen is a synthetic peptide directed towards the middle region of human C13ORF18
Specificity:	Expected reactivity: Human
Formulation:	Liquid. Purified antibody supplied in 1x PBS buffer with 0.09% (w/v) sodium azide and 2% sucrose.
Concentration:	lot specific
Purification:	Affinity purified
Conjugation:	Unconjugated
Storage:	For short term use, store at 2-8°C up to 1 week. For long term storage, store at -20°C in small aliquots to prevent freeze-thaw cycles.
Stability:	Shelf life: one year from despatch.
Predicted Protein Size:	59 kDa
Gene Name:	KIAA0226-like
Database Link:	NP_001273690.1 Entrez Gene 80183 Human Q9H714-6
Background:	This gene encodes a cysteine-rich protein that contains a putative zinc-RING and/or ribbon domain. The encoded protein is related to Run domain Beclin-1-interacting and cysteine-rich domain-containing protein, which plays a role in endocytic trafficking and autophagy. In cervical cancer cell lines, this gene is expressed at low levels and may function as a tumor suppressor. Promoter hypermethylation of this gene is observed in cervical cancer cell lines and tissue derived from human patients.
Synonyms:	C13orf18



[View online »](#)

Product images:



Host: Rabbit
Target Name: C13orf18
Sample Type: RPMI 8226 Whole Lysate
Antibody Dilution: 1.0 μ g/ml

Host: Rabbit
Target Name: C13ORF18
Sample Tissue: Human RPMI 8226 Whole Cell lysates
Antibody Dilution: 1 ug/ml