

## Product datasheet for **TA361838**

### **C1orf69 (IBA57) Rabbit Polyclonal Antibody**

#### **Product data:**

Product Type:	Primary Antibodies
Applications:	WB
Reactivity:	Human
Host:	Rabbit
Clonality:	Polyclonal
Immunogen:	The immunogen is a synthetic peptide directed towards the middle region of human C1ORF69
Specificity:	<b>Expected reactivity:</b> Human
Formulation:	Liquid. Purified antibody supplied in 1x PBS buffer with 0.09% (w/v) sodium azide and 2% sucrose. <i>Note that this product is shipped as lyophilized powder to China customers.</i>
Concentration:	lot specific
Purification:	Affinity purified
Conjugation:	Unconjugated
Storage:	For short term use, store at 2-8°C up to 1 week. For long term storage, store at -20°C in small aliquots to prevent freeze-thaw cycles.
Stability:	Shelf life: one year from despatch.
Predicted Protein Size:	38 kDa
Gene Name:	IBA57 homolog, iron-sulfur cluster assembly
Database Link:	<a href="#">NP_001010867.1</a> <a href="#">Entrez Gene 200205 Human</a> <a href="#">Q5T440</a>



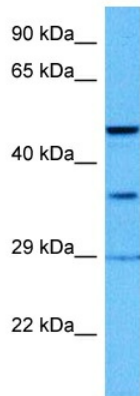
[View online »](#)

**Background:**

The protein encoded by this gene localizes to the mitochondrion and is part of the iron-sulfur cluster assembly pathway. The encoded protein functions late in the biosynthesis of mitochondrial 4Fe-4S proteins. Defects in this gene have been associated with autosomal recessive spastic paraplegia-74 and with multiple mitochondrial dysfunctions syndrome-3. Two transcript variants encoding different isoforms have been found for this gene. The smaller isoform is not likely to be localized to the mitochondrion since it lacks the amino-terminal transit peptide.

**Synonyms:**

4930543L23Rik; A230051G13Rik; C1orf69; RGD1306000; RP23-192P17.8

**Product images:**

Host: Rabbit  
Target Name: C1orf69  
Sample Type: THP-1 Cell Lysate  
Antibody Dilution: 1.0 $\mu$ g/ml

Host: Rabbit  
Target Name: C1ORF69  
Sample Tissue: Human THP-1 Whole Cell lysates  
Antibody Dilution: 1 $\mu$ g/ml