

## Product datasheet for **TA361833**

### CTP synthase (CTPS1) Rabbit Polyclonal Antibody

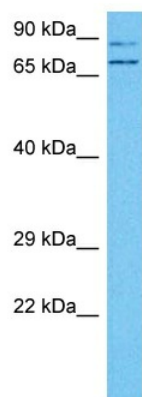
#### Product data:

Product Type:	Primary Antibodies
Applications:	WB
Reactivity:	Human
Host:	Rabbit
Clonality:	Polyclonal
Immunogen:	The immunogen is a synthetic peptide directed towards the C terminal region of human CTPS
Specificity:	<b>Expected reactivity:</b> Human
Formulation:	Liquid. Purified antibody supplied in 1x PBS buffer with 0.09% (w/v) sodium azide and 2% sucrose. <i>Note that this product is shipped as lyophilized powder to China customers.</i>
Concentration:	lot specific
Purification:	Affinity purified
Conjugation:	Unconjugated
Storage:	For short term use, store at 2-8°C up to 1 week. For long term storage, store at -20°C in small aliquots to prevent freeze-thaw cycles.
Stability:	Shelf life: one year from despatch.
Predicted Protein Size:	65 kDa
Gene Name:	CTP synthase 1
Database Link:	<a href="#">NP_001288166.1</a> <a href="#">Entrez Gene 1503 Human</a> <a href="#">P17812</a>
Background:	This gene encodes an enzyme responsible for the catalytic conversion of UTP (uridine triphosphate) to CTP (cytidine triphosphate). This reaction is an important step in the biosynthesis of phospholipids and nucleic acids. Activity of this protein is important in the immune system, and loss of function of this gene has been associated with immunodeficiency. Alternative splicing results in multiple transcript variants.
Synonyms:	CTPS
Protein Pathways:	Metabolic pathways, Pyrimidine metabolism



[View online »](#)

## Product images:



Host: Rabbit  
Target Name: CTPS  
Sample Type: K562 Cell Lysate  
Antibody Dilution: 1.0 $\mu$ g/ml

Host: Rabbit  
Target Name: CTPS  
Sample Tissue: Human K562 Whole Cell lysates  
Antibody Dilution: 1 $\mu$ g/ml