

## Product datasheet for **TA361825**

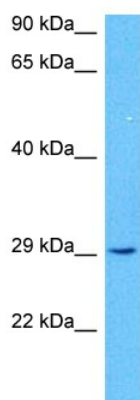
### **TMEM164 Rabbit Polyclonal Antibody**

#### **Product data:**

Product Type:	Primary Antibodies
Applications:	WB
Reactivity:	Human
Host:	Rabbit
Clonality:	Polyclonal
Immunogen:	The immunogen is a synthetic peptide directed towards the N terminal region of human TMEM164
Specificity:	<b>Expected reactivity:</b> Human
Formulation:	Liquid. Purified antibody supplied in 1x PBS buffer with 0.09% (w/v) sodium azide and 2% sucrose.
Concentration:	lot specific
Purification:	Affinity purified
Conjugation:	Unconjugated
Storage:	For short term use, store at 2-8°C up to 1 week. For long term storage, store at -20°C in small aliquots to prevent freeze-thaw cycles.
Stability:	Shelf life: one year from despatch.
Predicted Protein Size:	32 kDa
Gene Name:	transmembrane protein 164
Database Link:	<a href="#">NP_060168.2</a> <a href="#">Entrez Gene 84187 Human</a> <a href="#">Q5U3C3</a>
Background:	The function of this protein remains unknown.
Synonyms:	bB360B22.3; FLJ20173; FLJ22679; OTTHUMP00000023848; RP13-360B22.2
Protein Families:	Transmembrane



[View online »](#)

**Product images:**


Host: Rabbit  
 Target Name: TMEM164  
 Sample Type: HT1080 Cell Lysate  
 Antibody Dilution: 1.0µg/ml

Host: Rabbit  
 Target Name: TMEM164  
 Sample Tissue: Human HT1080 Whole Cell lysates  
 Antibody Dilution: 1ug/ml