

Product datasheet for **TA361823**

STX10 Rabbit Polyclonal Antibody

Product data:

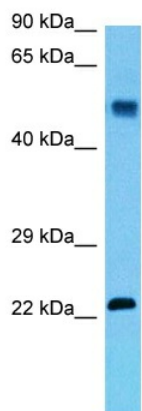
Product Type:	Primary Antibodies
Applications:	WB
Reactivity:	Human
Host:	Rabbit
Clonality:	Polyclonal
Immunogen:	The immunogen is a synthetic peptide directed towards the middle terminal region of human STX10
Specificity:	Expected reactivity: Human
Formulation:	Liquid. Purified antibody supplied in 1x PBS buffer with 0.09% (w/v) sodium azide and 2% sucrose. <i>Note that this product is shipped as lyophilized powder to China customers.</i>
Concentration:	lot specific
Purification:	Affinity purified
Conjugation:	Unconjugated
Storage:	For short term use, store at 2-8°C up to 1 week. For long term storage, store at -20°C in small aliquots to prevent freeze-thaw cycles.
Stability:	Shelf life: one year from despatch.
Predicted Protein Size:	22 kDa
Gene Name:	syntaxin 10
Database Link:	NP_003756.1 Entrez Gene 8677 Human O60499-2
Background:	This gene belongs to the syntaxin family and encodes a soluble N-ethylmaleimide sensitive factor attachment protein receptor (SNARE). The encoded protein is involved in docking and fusion events at the Golgi apparatus. Alternative splicing results in multiple transcript variants.
Synonyms:	hsyn10; SYN10
Protein Families:	Druggable Genome, Transmembrane



[View online »](#)

Protein Pathways: SNARE interactions in vesicular transport

Product images:



Host: Rabbit
Target Name: STX10
Sample Type: Thymus Tumor Lysate
Antibody Dilution: 1.0 μ g/ml

Host: Rabbit
Target Name: STX10
Sample Tissue: Human Thymus Tumor lysates
Antibody Dilution: 1 μ g/ml