

## Product datasheet for **TA361822**

### PP4R1 (PPP4R1) Rabbit Polyclonal Antibody

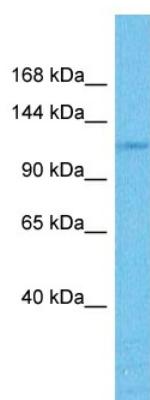
#### Product data:

Product Type:	Primary Antibodies
Applications:	WB
Reactivity:	Human
Host:	Rabbit
Clonality:	Polyclonal
Immunogen:	The immunogen is a synthetic peptide directed towards the middle region of human PPP4R1
Specificity:	<b>Expected reactivity:</b> Human
Formulation:	Liquid. Purified antibody supplied in 1x PBS buffer with 0.09% (w/v) sodium azide and 2% sucrose. <i>Note that this product is shipped as lyophilized powder to China customers.</i>
Concentration:	lot specific
Purification:	Affinity purified
Conjugation:	Unconjugated
Storage:	For short term use, store at 2-8°C up to 1 week. For long term storage, store at -20°C in small aliquots to prevent freeze-thaw cycles.
Stability:	Shelf life: one year from despatch.
Predicted Protein Size:	107 kDa
Gene Name:	protein phosphatase 4 regulatory subunit 1
Database Link:	<a href="#">NP_001035847.1</a> <a href="#">Entrez Gene 9989 Human</a> <a href="#">Q8TF05</a>
Background:	This gene encodes one of several alternate regulatory subunits of serine/threonine protein phosphatase 4 (PP4). The protein features multiple HEAT repeats. This protein forms a complex with PP4RC. This complex may have a distinct role from other PP4 complexes, including regulation of HDAC3. There is also a transcribed pseudogene on chromosome 20. Alternative splicing results in multiple transcript variants.
Synonyms:	MEG1; PP4(Rmeg); PP4R1
Protein Families:	Druggable Genome, Phosphatase



[View online »](#)

## Product images:



Host: Rabbit  
Target Name: PPP4R1  
Sample Type: HCT116 Cell Lysate  
Antibody Dilution: 1.0 $\mu$ g/ml

Host: Rabbit  
Target Name: PPP4R1  
Sample Tissue: Human HCT116 Whole Cell lysates  
Antibody Dilution: 1 $\mu$ g/ml