

Product datasheet for **TA361821**

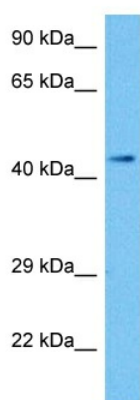
SLC35E1 Rabbit Polyclonal Antibody

Product data:

Product Type:	Primary Antibodies
Applications:	WB
Reactivity:	Human
Host:	Rabbit
Clonality:	Polyclonal
Immunogen:	The immunogen is a synthetic peptide directed towards the C terminal region of human SLC35E1
Specificity:	Expected reactivity: Human
Formulation:	Liquid. Purified antibody supplied in 1x PBS buffer with 0.09% (w/v) sodium azide and 2% sucrose. <i>Note that this product is shipped as lyophilized powder to China customers.</i>
Concentration:	lot specific
Purification:	Affinity purified
Conjugation:	Unconjugated
Storage:	For short term use, store at 2-8°C up to 1 week. For long term storage, store at -20°C in small aliquots to prevent freeze-thaw cycles.
Stability:	Shelf life: one year from despatch.
Predicted Protein Size:	45 kDa
Gene Name:	solute carrier family 35 member E1
Database Link:	NP_079157.3 Entrez Gene 79939 Human Q96K37
Background:	Putative transporter.
Synonyms:	DKFZp564G0462; FLJ14251; FLJ36689; MGC44954
Protein Families:	Transmembrane



[View online »](#)

Product images:

Host: Rabbit
Target Name: SLC35E1
Sample Type: COLO205 Cell Lysate
Antibody Dilution: 1.0 μ g/ml

Host: Rabbit
Target Name: SLC35E1
Sample Tissue: Human COLO205 Whole Cell lysates
Antibody Dilution: 1 μ g/ml