

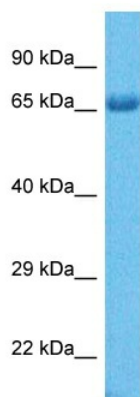
## Product datasheet for **TA361819**

### NT5DC2 Rabbit Polyclonal Antibody

#### Product data:

Product Type:	Primary Antibodies
Applications:	WB
Reactivity:	Human
Host:	Rabbit
Clonality:	Polyclonal
Immunogen:	The immunogen is a synthetic peptide directed towards the middle terminal region of human NT5DC2
Specificity:	<b>Expected reactivity:</b> Human
Formulation:	Liquid. Purified antibody supplied in 1x PBS buffer with 0.09% (w/v) sodium azide and 2% sucrose.
Concentration:	lot specific
Purification:	Affinity purified
Conjugation:	Unconjugated
Storage:	For short term use, store at 2-8°C up to 1 week. For long term storage, store at -20°C in small aliquots to prevent freeze-thaw cycles.
Stability:	Shelf life: one year from despatch.
Predicted Protein Size:	61 kDa
Gene Name:	5'-nucleotidase domain containing 2
Database Link:	<a href="#">NP_001127703.1</a> <a href="#">Entrez Gene 64943 Human</a> <a href="#">Q9H857-2</a>
Background:	The function of this protein remains unknown.
Synonyms:	FLJ12442

[View online »](#)

**Product images:**


Host: Rabbit  
 Target Name: NT5DC2  
 Sample Type: Ovary Tumor Lysate  
 Antibody Dilution: 1.0µg/ml

Host: Rabbit  
 Target Name: NT5DC2  
 Sample Tissue: Human Ovary Tumor lysates  
 Antibody Dilution: 1ug/ml