

Product datasheet for **TA361818**

SLC35A5 Rabbit Polyclonal Antibody

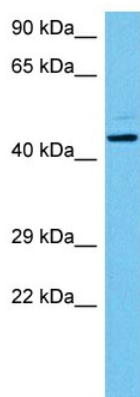
Product data:

Product Type:	Primary Antibodies
Applications:	WB
Reactivity:	Human
Host:	Rabbit
Clonality:	Polyclonal
Immunogen:	The immunogen is a synthetic peptide directed towards the C terminal region of human SLC35A5
Specificity:	Expected reactivity: Human
Formulation:	Liquid. Purified antibody supplied in 1x PBS buffer with 0.09% (w/v) sodium azide and 2% sucrose.
Concentration:	lot specific
Purification:	Affinity purified
Conjugation:	Unconjugated
Storage:	For short term use, store at 2-8°C up to 1 week. For long term storage, store at -20°C in small aliquots to prevent freeze-thaw cycles.
Stability:	Shelf life: one year from despatch.
Predicted Protein Size:	46 kDa
Gene Name:	solute carrier family 35 member A5
Database Link:	NP_060415.1 Entrez Gene 55032 Human Q9BS91
Background:	This gene encodes a transmembrane protein which belongs to subfamily 35A of the solute carrier superfamily. The encoded protein is a nucleoside-sugar transporter. Alternative splicing results in multiple transcript variants.
Synonyms:	DKFZp434E102; FLJ111130; FLJ20730; FLJ25973
Protein Families:	Transmembrane



[View online »](#)

Product images:



Host: Rabbit
Target Name: SLC35A5
Sample Type: Du145 Cell Lysate
Antibody Dilution: 1.0µg/ml

Host: Rabbit
Target Name: SLC35A5
Sample Tissue: Human Du145 Whole Cell lysates
Antibody Dilution: 1ug/ml