

Product datasheet for **TA361816**

MPHOSPH10 Rabbit Polyclonal Antibody

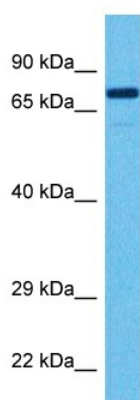
Product data:

Product Type:	Primary Antibodies
Applications:	WB
Reactivity:	Human
Host:	Rabbit
Clonality:	Polyclonal
Immunogen:	The immunogen is a synthetic peptide directed towards the middle region of human MPHOSPH10
Specificity:	Expected reactivity: Human
Formulation:	Liquid. Purified antibody supplied in 1x PBS buffer with 0.09% (w/v) sodium azide and 2% sucrose.
Concentration:	lot specific
Purification:	Affinity purified
Conjugation:	Unconjugated
Storage:	For short term use, store at 2-8°C up to 1 week. For long term storage, store at -20°C in small aliquots to prevent freeze-thaw cycles.
Stability:	Shelf life: one year from despatch.
Predicted Protein Size:	74 kDa
Gene Name:	M-phase phosphoprotein 10
Database Link:	NP_005782.1 Entrez Gene 10199 Human O00566
Background:	This gene encodes a protein that is phosphorylated during mitosis. The protein localizes to the nucleolus during interphase and to the chromosomes during M phase. The protein associates with the U3 small nucleolar ribonucleoprotein 60-80S complexes and may be involved in pre-rRNA processing.
Synonyms:	CT90; MPP10; MPP10P



[View online »](#)

Product images:



Host: Rabbit
 Target Name: MPHOSPH10
 Sample Type: 786-0 Cell Lysate
 Antibody Dilution: 1.0µg/ml

Host: Rabbit
 Target Name: MPHOSPH10
 Sample Tissue: Human 786-0 Whole Cell lysates
 Antibody Dilution: 1ug/ml