

Product datasheet for **TA361811**

TFIIE beta (GTF2E2) Rabbit Polyclonal Antibody

Product data:

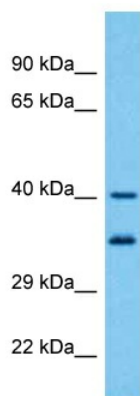
Product Type:	Primary Antibodies
Applications:	WB
Reactivity:	Human
Host:	Rabbit
Clonality:	Polyclonal
Immunogen:	The immunogen is a synthetic peptide directed towards the middle terminal region of human GTF2E2
Specificity:	Expected reactivity: Human
Formulation:	Liquid. Purified antibody supplied in 1x PBS buffer with 0.09% (w/v) sodium azide and 2% sucrose. <i>Note that this product is shipped as lyophilized powder to China customers.</i>
Concentration:	lot specific
Purification:	Affinity purified
Conjugation:	Unconjugated
Storage:	For short term use, store at 2-8°C up to 1 week. For long term storage, store at -20°C in small aliquots to prevent freeze-thaw cycles.
Stability:	Shelf life: one year from despatch.
Predicted Protein Size:	33 kDa
Gene Name:	general transcription factor IIE subunit 2
Database Link:	NP_002086.1 Entrez Gene 2961 Human P29084
Background:	Recruits TFIIF to the initiation complex and stimulates the RNA polymerase II C-terminal domain kinase and DNA-dependent ATPase activities of TFIIF. Both TFIIF and TFIIE are required for promoter clearance by RNA polymerase.
Synonyms:	FE; TF2E2; TFIIE-B; TFIIE-beta
Protein Families:	Transcription Factors



[View online »](#)

Protein Pathways: Basal transcription factors

Product images:



Host: Rabbit
Target Name: GTF2E2
Sample Type: K562 Cell Lysate
Antibody Dilution: 1.0 μ g/ml

Host: Rabbit
Target Name: GTF2E2
Sample Tissue: Human K562 Whole Cell lysates
Antibody Dilution: 1 μ g/ml