

Product datasheet for **TA361804**

KPC2 (UBAC1) Rabbit Polyclonal Antibody

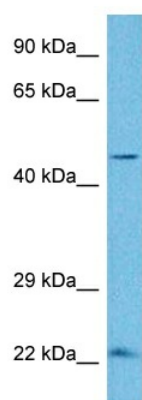
Product data:

Product Type:	Primary Antibodies
Applications:	WB
Reactivity:	Human
Host:	Rabbit
Clonality:	Polyclonal
Immunogen:	The immunogen is a synthetic peptide directed towards the middle region of human UBAC1
Specificity:	Expected reactivity: Human
Formulation:	Liquid. Purified antibody supplied in 1x PBS buffer with 0.09% (w/v) sodium azide and 2% sucrose. <i>Note that this product is shipped as lyophilized powder to China customers.</i>
Concentration:	lot specific
Purification:	Affinity purified
Conjugation:	Unconjugated
Storage:	For short term use, store at 2-8°C up to 1 week. For long term storage, store at -20°C in small aliquots to prevent freeze-thaw cycles.
Stability:	Shelf life: one year from despatch.
Predicted Protein Size:	45 kDa
Gene Name:	UBA domain containing 1
Database Link:	NP_057256.2 Entrez Gene 10422 Human Q9BSL1
Background:	Non-catalytic subunit of the KPC complex that acts as E3 ubiquitin-protein ligase. Required for poly-ubiquitination and proteasome-mediated degradation of CDKN1B during G1 phase of the cell cycle.
Synonyms:	GBDR1; KPC2; RP11-432J22.3; UBADC1
Protein Families:	Druggable Genome



[View online »](#)

Product images:



Host: Rabbit
Target Name: UBAC1
Sample Type: Ovary Tumor Lysate
Antibody Dilution: 1.0 μ g/ml

Host: Rabbit
Target Name: UBAC1
Sample Tissue: Human Ovary Tumor lysates
Antibody Dilution: 1 μ g/ml