

Product datasheet for **TA361802**

Apolipoprotein L 5 (APOL5) Rabbit Polyclonal Antibody

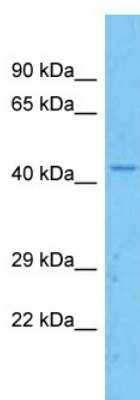
Product data:

Product Type:	Primary Antibodies
Applications:	WB
Reactivity:	Human
Host:	Rabbit
Clonality:	Polyclonal
Immunogen:	The immunogen is a synthetic peptide directed towards the middle region of human APOL5
Specificity:	Expected reactivity: Human
Formulation:	Liquid. Purified antibody supplied in 1x PBS buffer with 0.09% (w/v) sodium azide and 2% sucrose.
Concentration:	lot specific
Purification:	Affinity purified
Conjugation:	Unconjugated
Storage:	For short term use, store at 2-8°C up to 1 week. For long term storage, store at -20°C in small aliquots to prevent freeze-thaw cycles.
Stability:	Shelf life: one year from despatch.
Predicted Protein Size:	47 kDa
Gene Name:	apolipoprotein L5
Database Link:	NP_085145.1 Entrez Gene 80831 Human Q9BWW9
Background:	This gene is a member of the apolipoprotein L gene family. The encoded protein is found in the cytoplasm, where it may affect the movement of lipids or allow the binding of lipids to organelles.
Synonyms:	APOL-V; APOLV



[View online »](#)

Product images:



Host: Rabbit
Target Name: APOL5
Sample Type: K562 Cell Lysate
Antibody Dilution: 1.0µg/ml

Host: Rabbit
Target Name: APOL5
Sample Tissue: Human K562 Whole Cell lysates
Antibody Dilution: 1ug/ml