

Product datasheet for **TA361796**

RBM16 (SCAF8) Rabbit Polyclonal Antibody

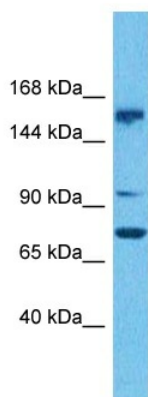
Product data:

Product Type:	Primary Antibodies
Applications:	WB
Reactivity:	Human
Host:	Rabbit
Clonality:	Polyclonal
Immunogen:	The immunogen is a synthetic peptide directed towards the C terminal region of human SCAF8
Specificity:	Expected reactivity: Human
Formulation:	Liquid. Purified antibody supplied in 1x PBS buffer with 0.09% (w/v) sodium azide and 2% sucrose.
Concentration:	lot specific
Purification:	Affinity purified
Conjugation:	Unconjugated
Storage:	For short term use, store at 2-8°C up to 1 week. For long term storage, store at -20°C in small aliquots to prevent freeze-thaw cycles.
Stability:	Shelf life: one year from despatch.
Predicted Protein Size:	147 kDa
Gene Name:	SR-related CTD associated factor 8
Database Link:	NP_001273117.1 Entrez Gene 22828 Human Q9UPN6-2
Background:	May play a role in mRNA processing.
Synonyms:	A630086M08Rik; A930036P18Rik; AA408306; AI447644; AI448652; AU015035; mKIAA1116; Rbm16



[View online »](#)

Product images:



Host: Rabbit
Target Name: SCAF8
Sample Type: 293T Cell Lysate
Antibody Dilution: 1.0 μ g/ml

Host: Rabbit
Target Name: SCAF8
Sample Tissue: Human 293T Whole Cell lysates
Antibody Dilution: 1 μ g/ml