

## Product datasheet for **TA361786**

### POGLUT2 Rabbit Polyclonal Antibody

#### Product data:

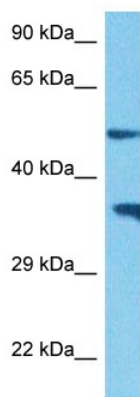
Product Type:	Primary Antibodies
Applications:	WB
Reactivity:	Human
Host:	Rabbit
Clonality:	Polyclonal
Immunogen:	The immunogen is a synthetic peptide directed towards the middle region of human KDELC1
Specificity:	<b>Expected reactivity:</b> Human
Formulation:	Liquid. Purified antibody supplied in 1x PBS buffer with 0.09% (w/v) sodium azide and 2% sucrose.
Concentration:	lot specific
Purification:	Affinity purified
Conjugation:	Unconjugated
Storage:	For short term use, store at 2-8°C up to 1 week. For long term storage, store at -20°C in small aliquots to prevent freeze-thaw cycles.
Stability:	Shelf life: one year from despatch.
Predicted Protein Size:	55 kDa
Gene Name:	KDEL motif containing 1
Database Link:	<a href="#">NP_076994.2</a> <a href="#">Entrez Gene 79070 Human</a> <a href="#">Q6UW63</a>
Background:	This gene encodes a protein product localized to the lumen of the endoplasmic reticulum. As a member of the endoplasmic reticulum protein family the encoded protein contains a Lys-Asp-Glu-Leu or KDEL motif located at the extreme C-terminus which prevents all endoplasmic reticulum resident proteins from being secreted. Proteins carrying this motif are bound by a receptor in the Golgi apparatus so that the receptor-ligand complex returns to the endoplasmic reticulum. A processed non-transcribed pseudogene located in an intron of a sodium transporter gene on chromosome 5 has been defined for this gene. This gene has multiple transcript variants which are predicted to encode distinct isoforms.



[View online »](#)

Synonyms: EP58; KDELC1; MGC5302

### Product images:



Host: Rabbit  
Target Name: KDELC1  
Sample Type: Jurkat Cell Lysate  
Antibody Dilution: 1.0 $\mu$ g/ml

Host: Rabbit  
Target Name: KDELC1  
Sample Tissue: Human Jurkat Whole Cell lysates  
Antibody Dilution: 1 $\mu$ g/ml