

## Product datasheet for **TA361783**

### Importin4 (IPO4) Rabbit Polyclonal Antibody

#### Product data:

Product Type:	Primary Antibodies
Applications:	WB
Reactivity:	Human
Host:	Rabbit
Clonality:	Polyclonal
Immunogen:	The immunogen is a synthetic peptide directed towards the middle region of human IPO4
Specificity:	<b>Expected reactivity:</b> Human
Formulation:	Liquid. Purified antibody supplied in 1x PBS buffer with 0.09% (w/v) sodium azide and 2% sucrose. <i>Note that this product is shipped as lyophilized powder to China customers.</i>
Concentration:	lot specific
Purification:	Affinity purified
Conjugation:	Unconjugated
Storage:	For short term use, store at 2-8°C up to 1 week. For long term storage, store at -20°C in small aliquots to prevent freeze-thaw cycles.
Stability:	Shelf life: one year from despatch.
Predicted Protein Size:	118 kDa
Gene Name:	importin 4
Database Link:	<a href="#">NP_078934.3</a> <a href="#">Entrez Gene 79711 Human</a> <a href="#">Q8TEX9</a>



[View online »](#)

**Background:**

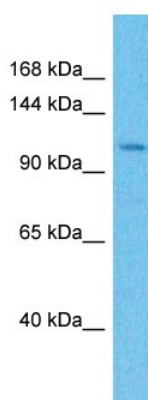
Functions in nuclear protein import as nuclear transport receptor. Serves as receptor for nuclear localization signals (NLS) in cargo substrates. Is thought to mediate docking of the importin/substrate complex to the nuclear pore complex (NPC) through binding to nucleoporin and the complex is subsequently translocated through the pore by an energy requiring, Ran-dependent mechanism. At the nucleoplasmic side of the NPC, Ran binds to the importin, the importin/substrate complex dissociates and importin is re-exported from the nucleus to the cytoplasm where GTP hydrolysis releases Ran. The directionality of nuclear import is thought to be conferred by an asymmetric distribution of the GTP- and GDP-bound forms of Ran between the cytoplasm and nucleus. Mediates the nuclear import of RPS3A. In vitro, mediates the nuclear import of human cytomegalovirus UL84 by recognizing a non-classical NLS.

**Synonyms:**

FLJ23338; Imp4; Imp4b; Importin-4b; MGC131665; RANBP4

**Protein Families:**

Druggable Genome

**Product images:**


Host: Rabbit  
Target Name: IPO4  
Sample Type: Liver Tumor Lysate  
Antibody Dilution: 1.0µg/ml

Host: Rabbit  
Target Name: IPO4  
Sample Tissue: Human Liver Tumor lysates  
Antibody Dilution: 1ug/ml