

Product datasheet for **TA361782**

PAXBP1 Rabbit Polyclonal Antibody

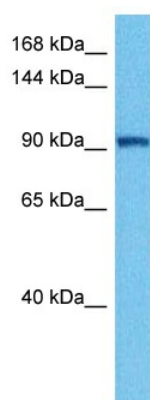
Product data:

Product Type:	Primary Antibodies
Applications:	WB
Reactivity:	Human
Host:	Rabbit
Clonality:	Polyclonal
Immunogen:	The immunogen is a synthetic peptide directed towards the middle region of human GCFC1
Specificity:	Expected reactivity: Human
Formulation:	Liquid. Purified antibody supplied in 1x PBS buffer with 0.09% (w/v) sodium azide and 2% sucrose. <i>Note that this product is shipped as lyophilized powder to China customers.</i>
Concentration:	lot specific
Purification:	Affinity purified
Conjugation:	Unconjugated
Storage:	For short term use, store at 2-8°C up to 1 week. For long term storage, store at -20°C in small aliquots to prevent freeze-thaw cycles.
Stability:	Shelf life: one year from despatch.
Predicted Protein Size:	93 kDa
Gene Name:	PAX3 and PAX7 binding protein 1
Database Link:	NP_037461.2 Entrez Gene 94104 Human Q9Y5B6-2
Background:	This gene encodes a protein that may bind to GC-rich DNA sequences, which suggests its involvement in the regulation of transcription. Alternative splicing of this gene results in multiple transcript variants.
Synonyms:	BM020; C21orf66; FSAP105; GCFC; GCFC1; GCFC1-AS1



[View online »](#)

Product images:



Host: Rabbit
Target Name: GCFC1
Sample Type: DLD1 Cell Lysate
Antibody Dilution: 1.0 μ g/ml

Host: Rabbit
Target Name: GCFC1
Sample Tissue: Human DLD1 Whole Cell lysates
Antibody Dilution: 1 μ g/ml