

## Product datasheet for **TA361778**

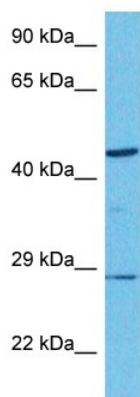
### GMPPA Rabbit Polyclonal Antibody

#### Product data:

Product Type:	Primary Antibodies
Applications:	WB
Reactivity:	Human
Host:	Rabbit
Clonality:	Polyclonal
Immunogen:	The immunogen is a synthetic peptide directed towards the middle region of human GMPPA
Specificity:	<b>Expected reactivity:</b> Human
Formulation:	Liquid. Purified antibody supplied in 1x PBS buffer with 0.09% (w/v) sodium azide and 2% sucrose.
Concentration:	lot specific
Purification:	Affinity purified
Conjugation:	Unconjugated
Storage:	For short term use, store at 2-8°C up to 1 week. For long term storage, store at -20°C in small aliquots to prevent freeze-thaw cycles.
Stability:	Shelf life: one year from despatch.
Predicted Protein Size:	46 kDa
Gene Name:	GDP-mannose pyrophosphorylase A
Database Link:	<a href="#">NP_037467.2</a> <a href="#">Entrez Gene 29926 Human</a> <a href="#">Q96IJ6</a>
Background:	This gene is thought to encode a GDP-mannose pyrophosphorylase. This enzyme catalyzes the reaction which converts mannose-1-phosphate and GTP to GDP-mannose which is involved in the production of N-linked oligosaccharides.
Synonyms:	OTTHUMP00000064862; OTTHUMP00000071324
Protein Pathways:	Amino sugar and nucleotide sugar metabolism, Fructose and mannose metabolism, Metabolic pathways



[View online »](#)

**Product images:**


Host: Rabbit  
 Target Name: GMPPA  
 Sample Type: Hela Cell Lysate  
 Antibody Dilution: 1.0µg/ml

Host: Rabbit  
 Target Name: GMPPA  
 Sample Tissue: Human Hela Whole Cell lysates  
 Antibody Dilution: 1ug/ml