

## Product datasheet for **TA361776**

### **FAM8A1 Rabbit Polyclonal Antibody**

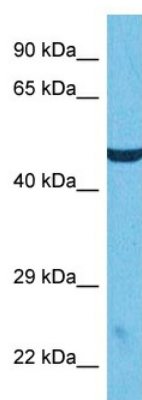
#### **Product data:**

|                         |   |
|-------------------------|---|
| Product Type:           | Primary Antibodies  |
| Applications:           | WB  |
| Reactivity:             | Human   |
| Host:                   | Rabbit  |
| Clonality:              | Polyclonal  |
| Immunogen:              | The immunogen is a synthetic peptide directed towards the N terminal region of human FAM8A1   |
| Specificity:            | <b>Expected reactivity:</b> Human   |
| Formulation:            | Liquid. Purified antibody supplied in 1x PBS buffer with 0.09% (w/v) sodium azide and 2% sucrose.<br><i>Note that this product is shipped as lyophilized powder to China customers.</i> |
| Concentration:          | lot specific  |
| Purification:           | Affinity purified   |
| Conjugation:            | Unconjugated  |
| Storage:                | For short term use, store at 2-8°C up to 1 week. For long term storage, store at -20°C in small aliquots to prevent freeze-thaw cycles.   |
| Stability:              | Shelf life: one year from despatch.   |
| Predicted Protein Size: | 45 kDa  |
| Gene Name:              | family with sequence similarity 8 member A1   |
| Database Link:          | <a href="#">NP_057339.1</a><br><a href="#">Entrez Gene 51439 Human</a><br><a href="#">Q9UBU6</a>  |
| Background:             | The function of this protein remains unknown.   |
| Synonyms:               | AHCP; FLJ23721  |
| Protein Families:       | Transmembrane   |



[View online »](#)

## Product images:



Host: Rabbit  
Target Name: FAM8A1  
Sample Type: 786-0 Cell Lysate  
Antibody Dilution: 1.0 $\mu$ g/ml

Host: Rabbit  
Target Name: FAM8A1  
Sample Tissue: Human 786-0 Whole Cell lysates  
Antibody Dilution: 1  $\mu$ g/ml