

## Product datasheet for **TA361775**

### ASB6 Rabbit Polyclonal Antibody

#### Product data:

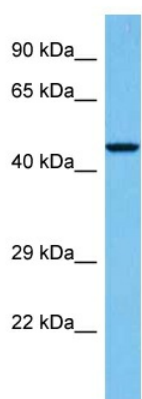
Product Type:	Primary Antibodies
Applications:	WB
Reactivity:	Human
Host:	Rabbit
Clonality:	Polyclonal
Immunogen:	The immunogen is a synthetic peptide directed towards the N terminal region of human ASB6
Specificity:	<b>Expected reactivity:</b> Human
Formulation:	Liquid. Purified antibody supplied in 1x PBS buffer with 0.09% (w/v) sodium azide and 2% sucrose. <i>Note that this product is shipped as lyophilized powder to China customers.</i>
Concentration:	lot specific
Purification:	Affinity purified
Conjugation:	Unconjugated
Storage:	For short term use, store at 2-8°C up to 1 week. For long term storage, store at -20°C in small aliquots to prevent freeze-thaw cycles.
Stability:	Shelf life: one year from despatch.
Predicted Protein Size:	46 kDa
Gene Name:	ankyrin repeat and SOCS box containing 6
Database Link:	<a href="#">NP_001189332.1</a> <a href="#">Entrez Gene 140459 Human</a> <a href="#">Q9NWX5</a>
Background:	The protein encoded by this gene belongs to a family of ankyrin repeat proteins that, along with four other protein families, contain a C-terminal SOCS box motif. Growing evidence suggests that the SOCS box, similar to the F-box, acts as a bridge between specific substrate-binding domains and the more generic proteins that comprise a large family of E3 ubiquitin protein ligases. Alternatively spliced transcript variants have been identified for this gene.
Synonyms:	ASB-6; FLJ20548; MGC1024



[View online »](#)

Protein Families: Druggable Genome

### Product images:



Host: Rabbit  
Target Name: ASB6  
Sample Type: U937 Cell Lysate  
Antibody Dilution: 1.0 $\mu$ g/ml

Host: Rabbit  
Target Name: ASB6  
Sample Tissue: Human U937 Whole Cell lysates  
Antibody Dilution: 1 $\mu$ g/ml