

## Product datasheet for **TA361773**

### CCDC33 Rabbit Polyclonal Antibody

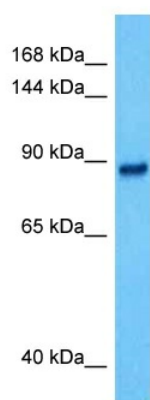
#### Product data:

Product Type:	Primary Antibodies
Applications:	WB
Reactivity:	Human
Host:	Rabbit
Clonality:	Polyclonal
Immunogen:	The immunogen is a synthetic peptide directed towards the middle terminal region of human CCDC33
Specificity:	<b>Expected reactivity:</b> Human
Formulation:	Liquid. Purified antibody supplied in 1x PBS buffer with 0.09% (w/v) sodium azide and 2% sucrose. <i>Note that this product is shipped as lyophilized powder to China customers.</i>
Concentration:	lot specific
Purification:	Affinity purified
Conjugation:	Unconjugated
Storage:	For short term use, store at 2-8°C up to 1 week. For long term storage, store at -20°C in small aliquots to prevent freeze-thaw cycles.
Stability:	Shelf life: one year from despatch.
Predicted Protein Size:	83 kDa
Gene Name:	coiled-coil domain containing 33
Database Link:	<a href="#">NP_079331.3</a> <a href="#">Entrez Gene 80125 Human</a> <a href="#">Q8N5R6-6</a>
Background:	The function of this protein remains unknown.
Synonyms:	CT61; FLJ23168; FLJ32855; MGC34145



[View online »](#)

## Product images:



Host: Rabbit  
Target Name: CCDC33  
Sample Type: COLO205 Cell Lysate  
Antibody Dilution: 1.0 $\mu$ g/ml

Host: Rabbit  
Target Name: CCDC33  
Sample Tissue: Human COLO205 Whole Cell lysates  
Antibody Dilution: 1 $\mu$ g/ml