

Product datasheet for **TA361771**

TUBA6 (TUBA1C) Rabbit Polyclonal Antibody

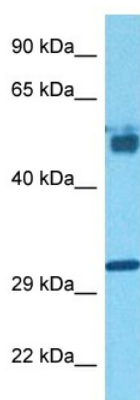
Product data:

Product Type:	Primary Antibodies
Applications:	WB
Reactivity:	Human
Host:	Rabbit
Clonality:	Polyclonal
Immunogen:	The immunogen is a synthetic peptide directed towards the C terminal region of human TUBA1C
Specificity:	Expected reactivity: Human
Formulation:	Liquid. Purified antibody supplied in 1x PBS buffer with 0.09% (w/v) sodium azide and 2% sucrose. <i>Note that this product is shipped as lyophilized powder to China customers.</i>
Concentration:	lot specific
Purification:	Affinity purified
Conjugation:	Unconjugated
Storage:	For short term use, store at 2-8°C up to 1 week. For long term storage, store at -20°C in small aliquots to prevent freeze-thaw cycles.
Stability:	Shelf life: one year from despatch.
Predicted Protein Size:	49 kDa
Gene Name:	tubulin alpha 1c
Database Link:	NP_116093.1 Entrez Gene 84790 Human Q9BQE3
Background:	Tubulin is the major constituent of microtubules. It binds two moles of GTP, one at an exchangeable site on the beta chain and one at a non-exchangeable site on the alpha chain.
Synonyms:	bcm948; MGC10851; MGC14580; TUBA6
Protein Pathways:	Gap junction, Pathogenic Escherichia coli infection



[View online »](#)

Product images:



Host: Rabbit
Target Name: TUBA1C
Sample Type: Lung Tumor Lysate
Antibody Dilution: 1.0 μ g/ml

Host: Rabbit
Target Name: TUBA1C
Sample Tissue: Human Lung Tumor lysates
Antibody Dilution: 1 μ g/ml