

Product datasheet for **TA361761**

PITRM1 Rabbit Polyclonal Antibody

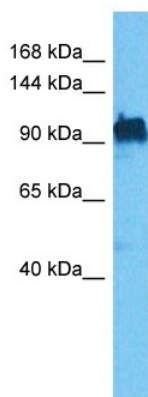
Product data:

Product Type:	Primary Antibodies
Applications:	WB
Reactivity:	Human
Host:	Rabbit
Clonality:	Polyclonal
Immunogen:	The immunogen is a synthetic peptide directed towards the middle region of human PITRM1
Specificity:	Expected reactivity: Human
Formulation:	Liquid. Purified antibody supplied in 1x PBS buffer with 0.09% (w/v) sodium azide and 2% sucrose. <i>Note that this product is shipped as lyophilized powder to China customers.</i>
Concentration:	lot specific
Purification:	Affinity purified
Conjugation:	Unconjugated
Storage:	For short term use, store at 2-8°C up to 1 week. For long term storage, store at -20°C in small aliquots to prevent freeze-thaw cycles.
Stability:	Shelf life: one year from despatch.
Predicted Protein Size:	114 kDa
Gene Name:	pitrilysin metallopeptidase 1
Database Link:	NP_001229236.1 Entrez Gene 10531 Human Q5JRX3
Background:	ATP-independent protease that degrades mitochondrial transit peptides after their cleavage. Also degrades other unstructured peptides. Specific for peptides in the range of 10 to 65 residues. Able to degrade amyloid beta A4 (APP) protein when it accumulates in mitochondrion, suggesting a link with Alzheimer disease. Shows a preference for cleavage after small polar residues and before basic residues, but without any positional preference.
Synonyms:	hMP1; hPreP; KIAA1104; MGC138192; MGC141929; MP1; PreP
Protein Families:	Druggable Genome, Protease



[View online »](#)

Product images:



Host: Rabbit
Target Name: PITRM1
Sample Type: Ovary Tumor Lysate
Antibody Dilution: 1.0 μ g/ml

Host: Rabbit
Target Name: PITRM1
Sample Tissue: Human Ovary Tumor lysates
Antibody Dilution: 1 μ g/ml