

Product datasheet for **TA361751**

GPATCH2 Rabbit Polyclonal Antibody

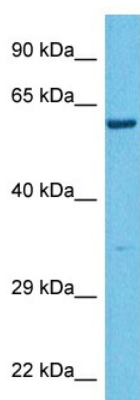
Product data:

Product Type:	Primary Antibodies
Applications:	WB
Reactivity:	Human
Host:	Rabbit
Clonality:	Polyclonal
Immunogen:	The immunogen is a synthetic peptide directed towards the middle region of human GPATCH2
Specificity:	Expected reactivity: Human
Formulation:	Liquid. Purified antibody supplied in 1x PBS buffer with 0.09% (w/v) sodium azide and 2% sucrose.
Concentration:	lot specific
Purification:	Affinity purified
Conjugation:	Unconjugated
Storage:	For short term use, store at 2-8°C up to 1 week. For long term storage, store at -20°C in small aliquots to prevent freeze-thaw cycles.
Stability:	Shelf life: one year from despatch.
Predicted Protein Size:	58 kDa
Gene Name:	G-patch domain containing 2
Database Link:	NP_001284683.1 Entrez Gene 55105 Human Q9NW75
Background:	Enhances the ATPase activity of DHX15 in vitro.
Synonyms:	CT110; FLJ10252; FLJ21048; GPATC2; MGC74998; RP11-361K17.1



[View online »](#)

Product images:



Host: Rabbit
Target Name: GPATCH2
Sample Type: Ovary Tumor Lysate
Antibody Dilution: 1.0µg/ml

Host: Rabbit
Target Name: GPATCH2
Sample Tissue: Human Ovary Tumor lysates
Antibody Dilution: 1ug/ml