

Product datasheet for **TA361748**

ZNF410 Rabbit Polyclonal Antibody

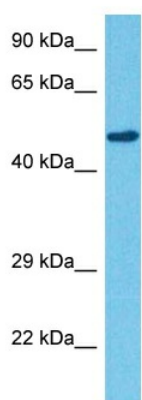
Product data:

| | |
|-------------------------|---|
| Product Type: | Primary Antibodies |
| Applications: | WB |
| Reactivity: | Human |
| Host: | Rabbit |
| Clonality: | Polyclonal |
| Immunogen: | The immunogen is a synthetic peptide directed towards the middle region of human ZNF410 |
| Specificity: | Expected reactivity: Human |
| Formulation: | Liquid. Purified antibody supplied in 1x PBS buffer with 0.09% (w/v) sodium azide and 2% sucrose. |
| Concentration: | lot specific |
| Purification: | Affinity purified |
| Conjugation: | Unconjugated |
| Storage: | For short term use, store at 2-8°C up to 1 week. For long term storage, store at -20°C in small aliquots to prevent freeze-thaw cycles. |
| Stability: | Shelf life: one year from despatch. |
| Predicted Protein Size: | 47 kDa |
| Gene Name: | zinc finger protein 410 |
| Database Link: | NP_001229853.1 Entrez Gene 57862 Human Q86VK4-3 |
| Background: | Transcription factor that activates transcription of matrix-remodeling genes such as MMP1 during fibroblast senescence. |
| Synonyms: | APA-1; APA1 |
| Protein Families: | Transcription Factors |



[View online »](#)

Product images:



Host: Rabbit
Target Name: ZNF410
Sample Type: HeLa Cell Lysate
Antibody Dilution: 1.0µg/ml

Host: Rabbit
Target Name: ZNF410
Sample Tissue: Human HeLa Whole Cell lysates
Antibody Dilution: 1 ug/ml